

MALY BIALY DOMEK

(Vocal + Chords)

Artist: **MIECZYSLAW FOGG**

Album: "ZAWSZE BĘDZIE CZEGOŚ CI BRAK" (1975)

Music: Zygmunt Lewandowski


Words: Wacław Gen



MALY BIALY DOMEK

from "ZAWSZE BĘDZIE CZEGOŚ CI BRAK" (1975)

Music by Zygmunt Lewandowski
Words by Waław Gen
MIECZYSLAW FOGG

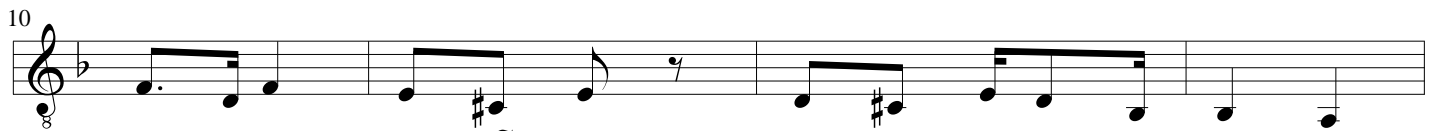
 = 110



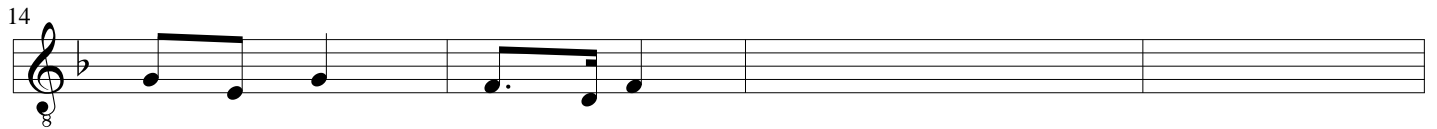
$\frac{G}{A}$ A^6 D^{7+} D^{7+} Em^7 A^{5+} D D^6 D^{5+} D $\frac{D}{F\#}$ F^0



Em $\frac{Em}{B\flat}$ $\frac{C}{E}$ A^7 D D^6 D A^7 A^9- A^7



Dm $\frac{Dm}{C}$ $\frac{E^7}{B\flat}$ $\frac{E^7_5-}{B\flat}$ A^7 $\frac{Dm}{F}$ $\frac{D}{F\#}$ Gm $\frac{B\flat^7}{A\flat}$ $\frac{B\flat}{A}$ $\frac{Dm}{A}$



$\frac{Gm^6}{E}$ A^7 Dm $\frac{Dm^7}{C}$

