

THE LADY IN RED

(Vocal + Chords)

Artist: **CHRIS DE BURGH**

Album: "INTO THE LIGHT" (1986)

Music: Christopher John Davison

Words: Christopher John Davison

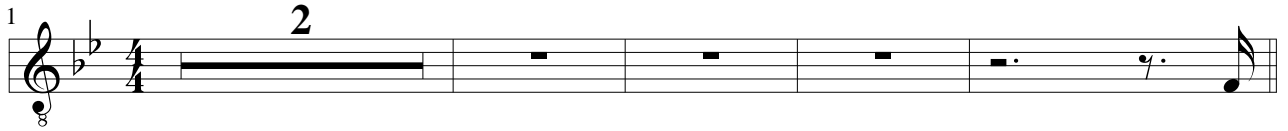


THE LADY IN RED

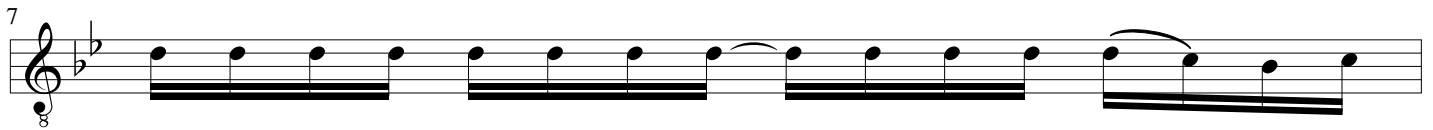
from "INTO THE LIGHT" (1986)

Music and Words by
Christopher John Davison
CHRIS DE BURGH

♩ = 77



B \flat **E \flat 7+** **Fsus \sharp** **B \flat** **E \flat 7+** **Fsus \sharp** I'VE



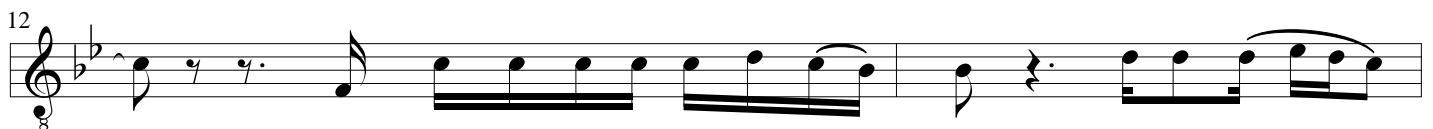
NEV - ER SEEN YOU LOOK - ING SO LOVE - - - LY AS YOU DID — TO - NIGHT,
B \flat **E \flat 7+**



I'VE NEV - ER SEEN YOU SHINE SO — BRIGHT, HMM, HMM, — HMM. — I'VE
Fadd \sharp **D 7** **D 7** **Gm** **F** **E \flat** **E \flat**
F \sharp **F**



NEV - ER SEEN SO MAN - Y MEN ASK — YOU IF YOU WANT - ED TO DANCE. —
B \flat **E \flat 7+**



— THEY'RE LOOK - ING FOR A LIT - TLE RO - MANCE, GIV - EN HALF —
Fadd \sharp **D 7** **D 7** **Gm** **B \flat 7**
F \sharp **F**



A CHANCE. AND I HAVE NEV - ER SEEN THAT DRESS YOU'RE WEAR - ING, OR THE
E \flat **Cm**



HIGH - LIGHTS IN YOUR HAIR — THAT CATCH — YOUR EYES,
F