

# LAST CHRISTMAS

(Vocal Melody + Chords)

Artist: **WHAM!**

Album: "MUSIC FROM THE  
EDGE OF HEAVEN" (1986)

Music: George Michael

Words: George Michael



# LAST CHRISTMAS

VOCAL MELODY  
CHORDS

from "MUSIC FROM THE EDGE OF HEAVEN" (1986)

Music and Words by  
George Michael  
WHAM!

♩ = ca 62

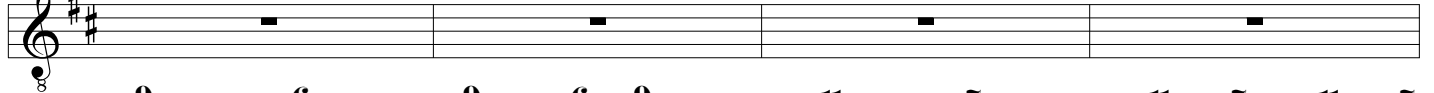
1 *ad libitum*



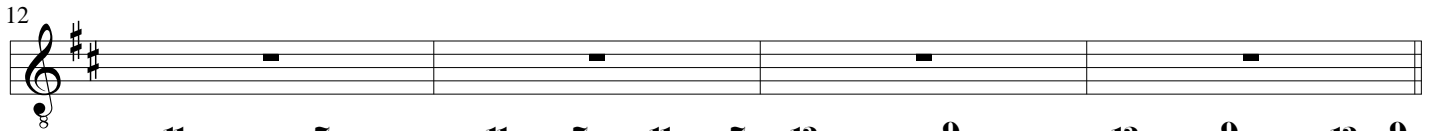
**F#m7** **Bbm7** **F#m7** **Bbm7** **Gm6** **Asus4** **A**  
**F#** **Bb**

♩ = 107

8 *a tempo*



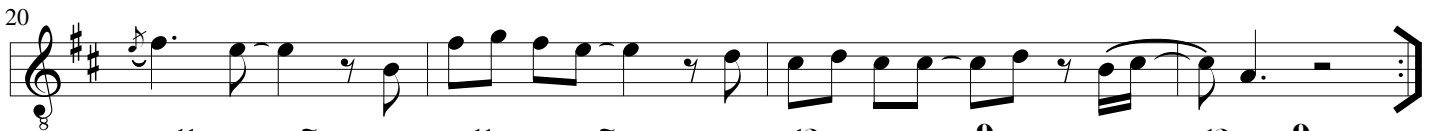
**D9+** **D6** **D9+** **D6** **D9+ D** **Bbm11** **Bbm7** **Bbm11 Bbm7** **Bbm11 Bbm7**



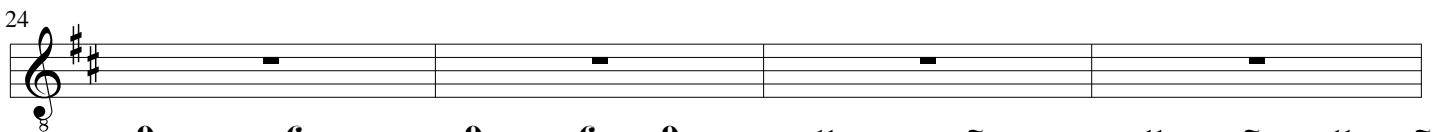
**Em11** **Em7** **Em11** **Em7** **Em11** **Em7** **A13** **A9** **A13** **A9** **A13** **A9**



**D9+** **D6** **D9+** **D6** **D9+ D** **Bbm11** **Bbm7** **Bbm11** **Bbm7**



**Em11** **Em7** **Em11** **Em7** **A13** **A9** **A13** **A9**



**D9+** **D6** **D9+** **D6** **D9+ D** **Bbm11** **Bbm7** **Bbm11** **Bbm7** **Bbm11** **Bbm7**

