

RATHER BE

(Vocal + Chords)

Artist: **JASMINE THOMPSON**

Album: "ANOTHER BUNDLE OF TANTRUMS" (2014)

Music: Grace Chatto, Nicole Marshall,
Jimmy Napes, Jack Patterson

Words: Grace Chatto, Nicole Marshall,
Jimmy Napes, Jack Patterson



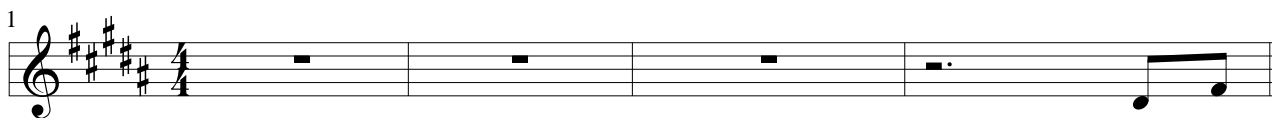
RATHER BE

VOCAL
CHORDS

from "ANOTHER BUNDLE OF TANTRUMS" (2014)

Music and Words by
Grace Chatto, Nicole Marshall,
Jimmy Napes, Jack Patterson
JASMINE THOMPSON

$\bullet = 112$



$G\#m^7$ $F\#$ $B\flat$ E $B\flat$ $B\flat$ $B\flat^7+$ $G\#m^7$ $F\#$ $B\flat$ E $B\flat$ $B\flat$ $B\flat^7+$ A
 $D\#$ $D\#$ $A\#$ $D\#$ $D\#$ $A\#$



THOU - SAND MILES FROM COM - FORT, WE HAVE TRAV - ELLED LAND AND SEA—
 $G\#m^7$ $F\#$ $B\flat$ E $B\flat$ $B\flat$ $B\flat^7+$ $G\#m^7$ $F\#$ $B\flat$
 $D\#$ $D\#$ $A\#$ $D\#$ $D\#$



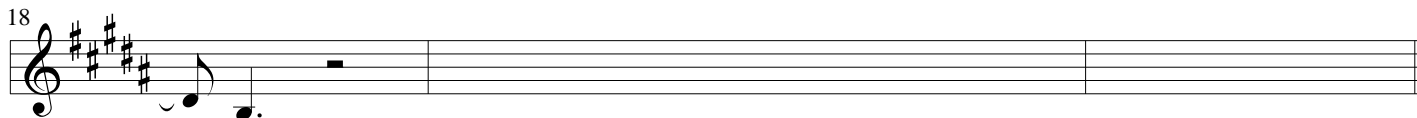
— BUT— AS LONG— AS YOU ARE WITH— ME, THERE'S
 E $B\flat$ $B\flat$ $B\flat^7+$ $G\#m^7$ $F\#$ $B\flat$ E $B\flat$ $B\flat$ $B\flat^7+$
 $D\#$ $A\#$ $D\#$ $D\#$ $A\#$



NO— PLACE— I'D RATH - ER BE.— I— WOULD WAIT FOR-EV - ER, EX -
 $C\#m$ $C\#m^7$ $D\#m^7$ $G\#m^7$ $F\#$ $B\flat$ E $B\flat$ $B\flat$ $B\flat^7+$
 $D\#$ $D\#$ $A\#$



ALT - ED— IN THE SCENE.— BUT AS LONG— AS YOU ARE WITH—
 $G\#m^7$ $F\#$ $B\flat$ E $B\flat$ $B\flat$ $B\flat^7+$ $G\#m^7$ $F\#$ $B\flat$
 $D\#$ $D\#$ $A\#$ $D\#$ $D\#$



— ME,
 E $B\flat$ $B\flat$ $B\flat^7+$
 $D\#$ $A\#$

